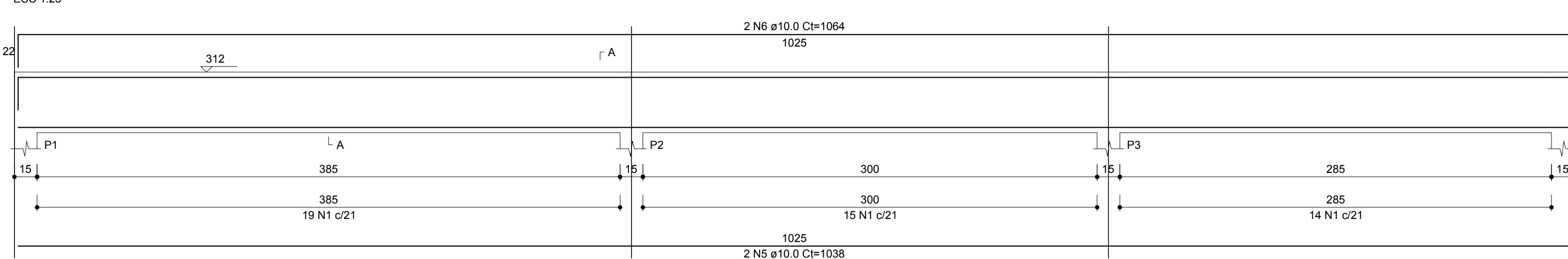
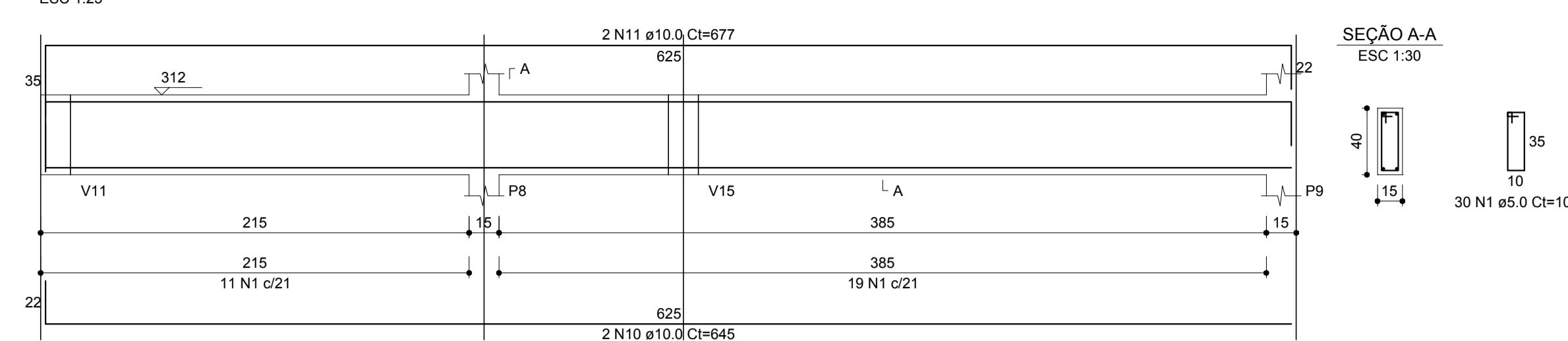


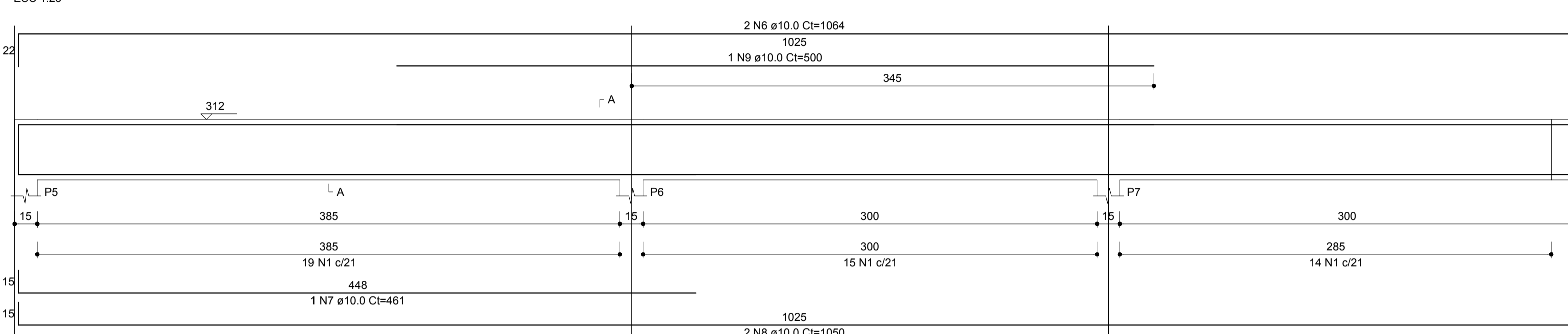
V1 (15 x 40)



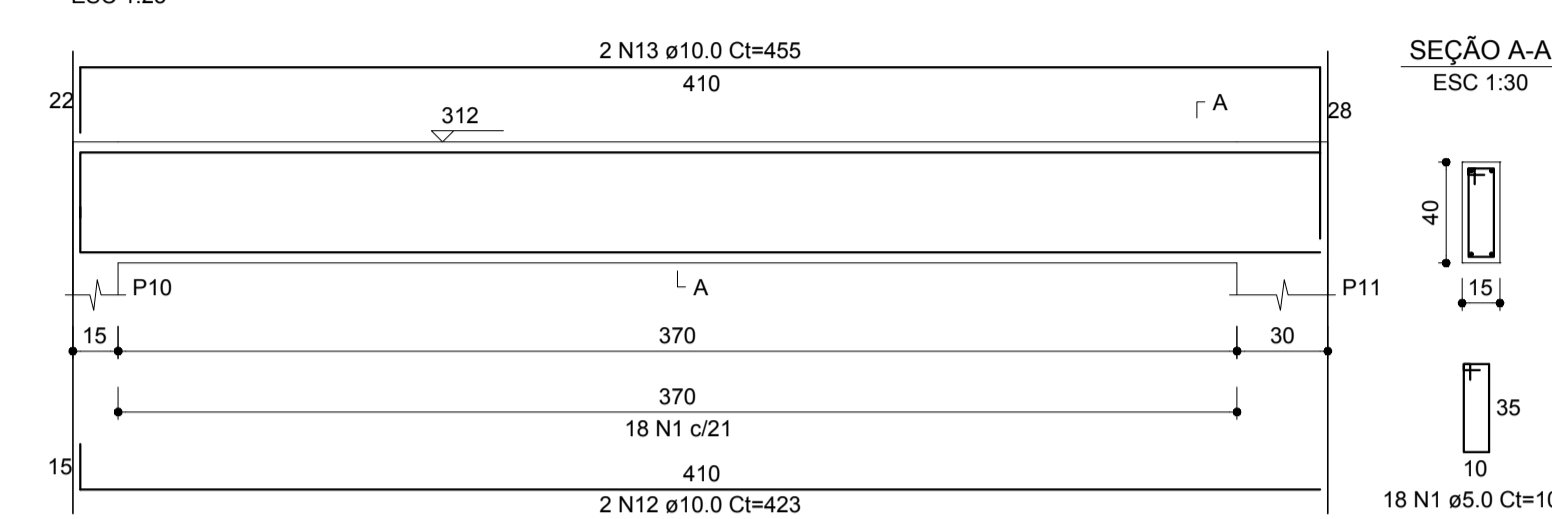
V4 (15 x 40)



V2 (15 x 40)



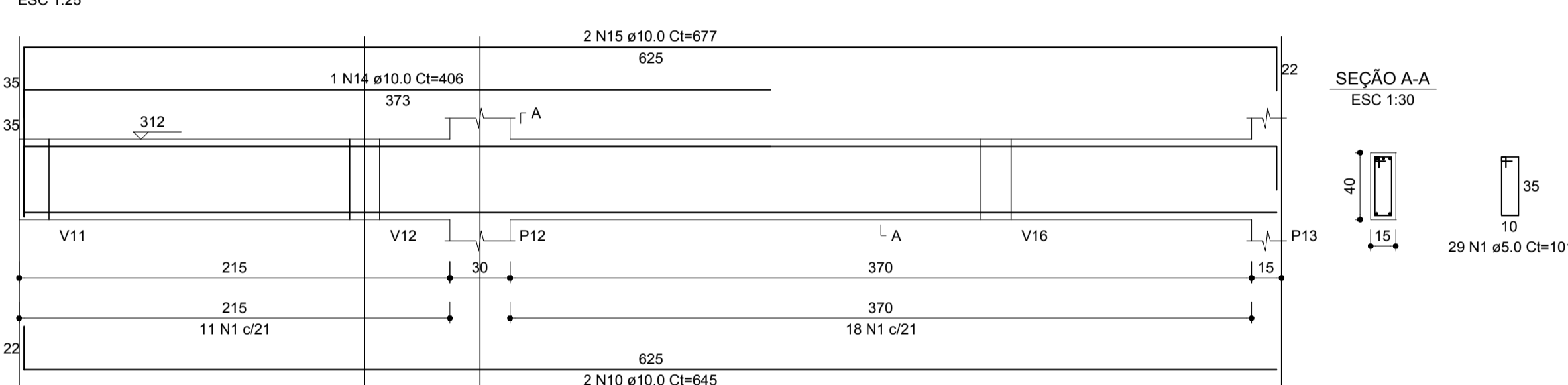
V5 (15 x 40)



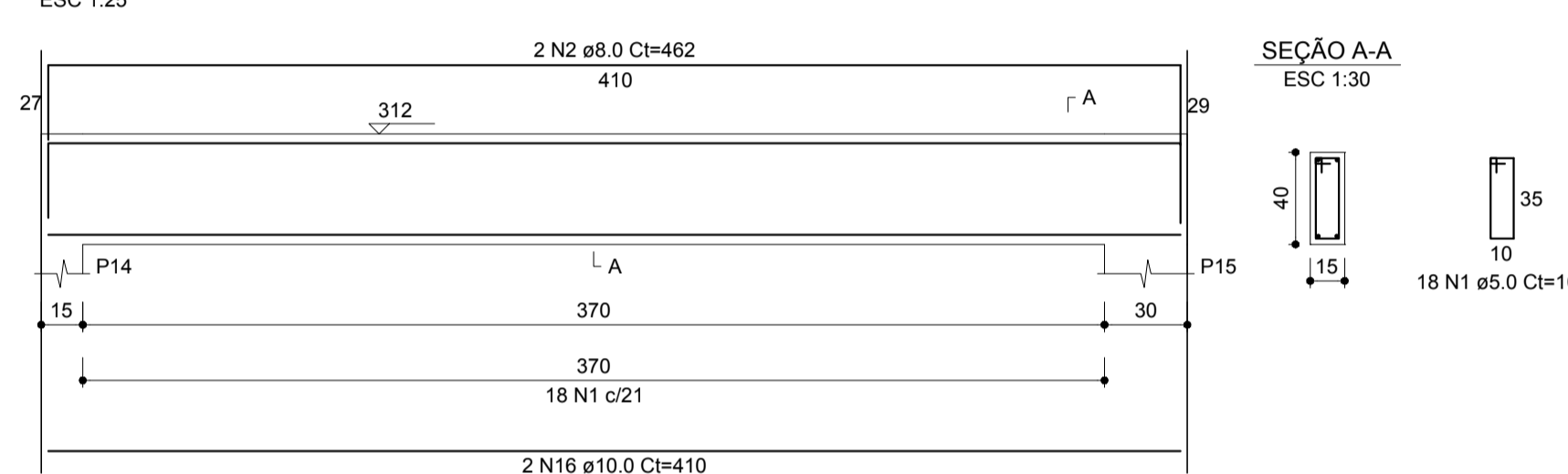
RELAÇÃO DO AÇO

AÇO	N	DIAM (mm)	QUANT	C.UNIT (cm)	C.TOTAL (cm)
CA50	1	5.0	408	101	41208
CA50	2	8.0	2	462	924
	3	8.0	2	1163	2326
	4	8.0	2	363	726
	5	10.0	2	1038	2076
	6	10.0	6	1064	6384
	7	10.0	1	461	461
	8	10.0	2	1050	2100
	9	10.0	1	500	500
	10	10.0	4	645	2580
	11	10.0	2	677	1354
	12	10.0	2	423	846
	13	10.0	2	455	910
	14	10.0	1	406	406
	15	10.0	2	677	1354
	16	10.0	2	410	820
	17	10.0	2	657	1314
	18	10.0	1	366	366
	19	10.0	2	681	1362
	20	10.0	2	1025	2050
	21	10.0	1	455	455
	22	10.0	2	1198	2396
	23	10.0	2	371	742
	24	10.0	2	1163	2326
	25	10.0	2	363	726
	26	10.0	1	878	878
	27	10.0	2	1198	2396
	28	10.0	2	372	744
	29	10.0	2	285	570
	30	10.0	2	317	634

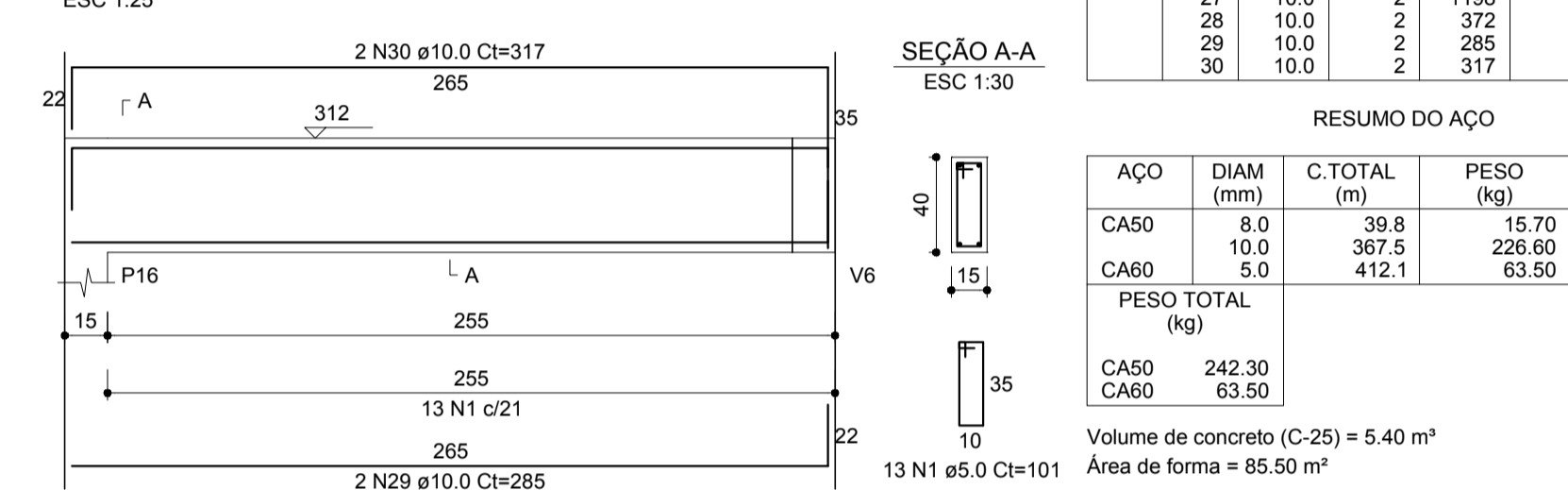
V6 (15 x 40)



V7 (15 x 40)



V12 (15 x 40)

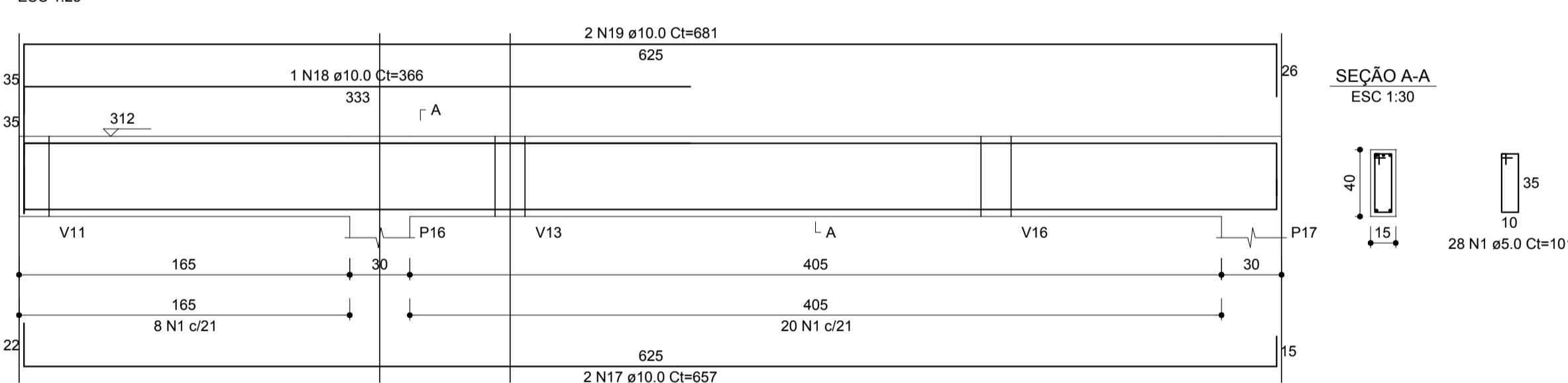


RESUMO DO AÇO

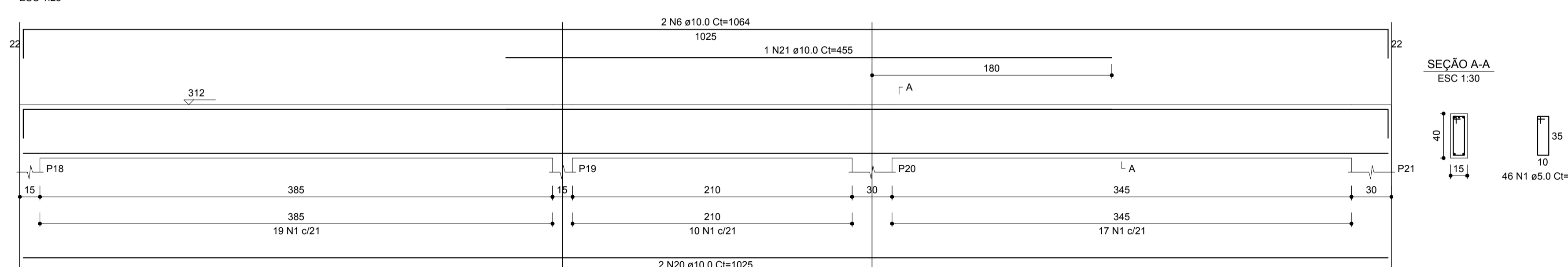
AÇO	DIAM (mm)	C.TOTAL (m)	PESO (kg)
CA50	8.0	39.8	15.70
CA60	10.0	367.5	226.60
CA60	5.0	412.1	63.50
PESO TOTAL (kg)			
CA50		242.30	
CA60		63.50	

Volume de concreto (C-25) = 5.40 m³
Área de forma = 85.50 m²

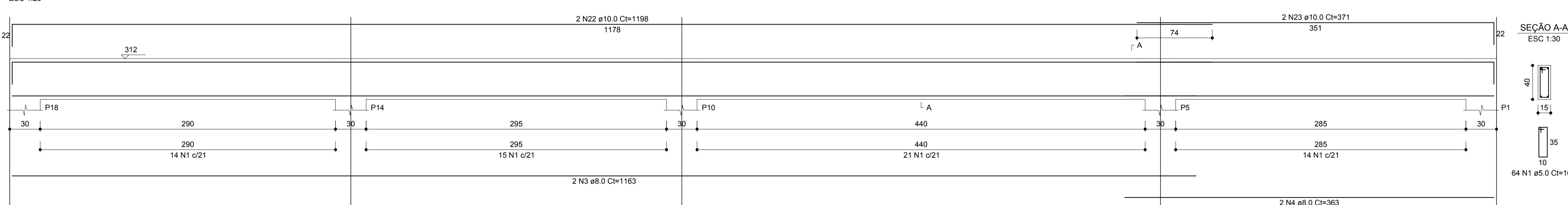
V8 (15 x 40)



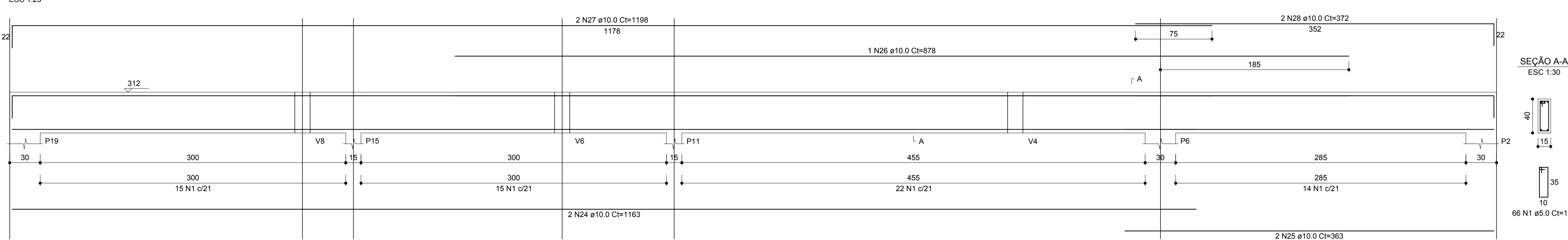
V9 (15 x 40)



V10 (15 x 40)



V11 (15 x 40)



DESCRIÇÃO	
PROJETO ESTRUTURAL - CENTRO DE REFERÊNCIA ESPECIALIZADO EM ASSISTÊNCIA SOCIAL	
PROPRIETÁRIO:	PREFEITURA MUNICIPAL DE BREJETUBA
LOGRADOURO:	RUA CARMEM AUZERINA DE SOUZA ULIANA
MUNICÍPIO:	BREJETUBA
ESTADO:	ESPIRITO SANTO
USO:	COMUNITÁRIO
DATA:	ABRIL/2018
ESPECIFICAÇÃO:	TÉRREO
PRANCHA:	06/11
CONTEUDO DA PRANCHA:	ARMAÇÃO DAS VIGAS
CONTATO:	ron7@ron7.com.br - 27-3733-1349 / 27-99970-7034
RESPONSÁVEL TÉCNICO:	Claudinei Uliana Roncete Engenheiro Civil CREA:ES-042472/D



NOTA
1- TODAS AS MEDIDAS DEVERÃO SER CONFERIDAS NO LOCAL
2- EM CASO DE DÚVIDA, CONSULTE O ENGENHEIRO. TEL:273733-1349
3- MEDIDAS EM CENTÍMETROS