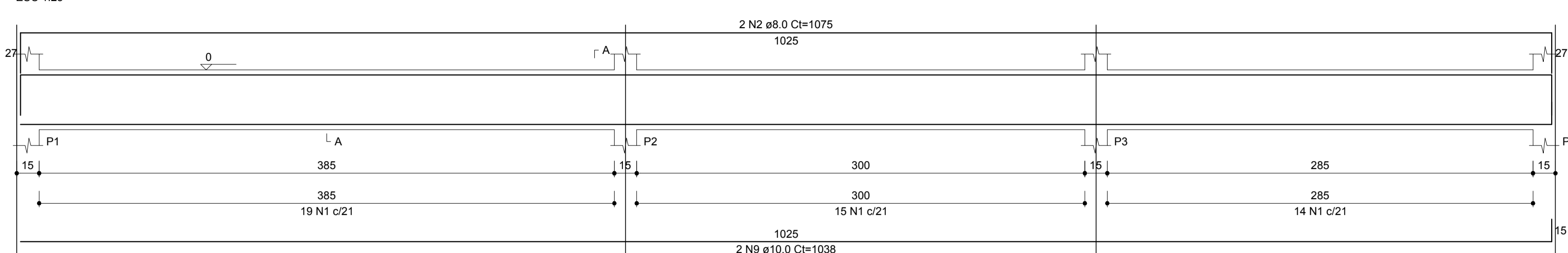
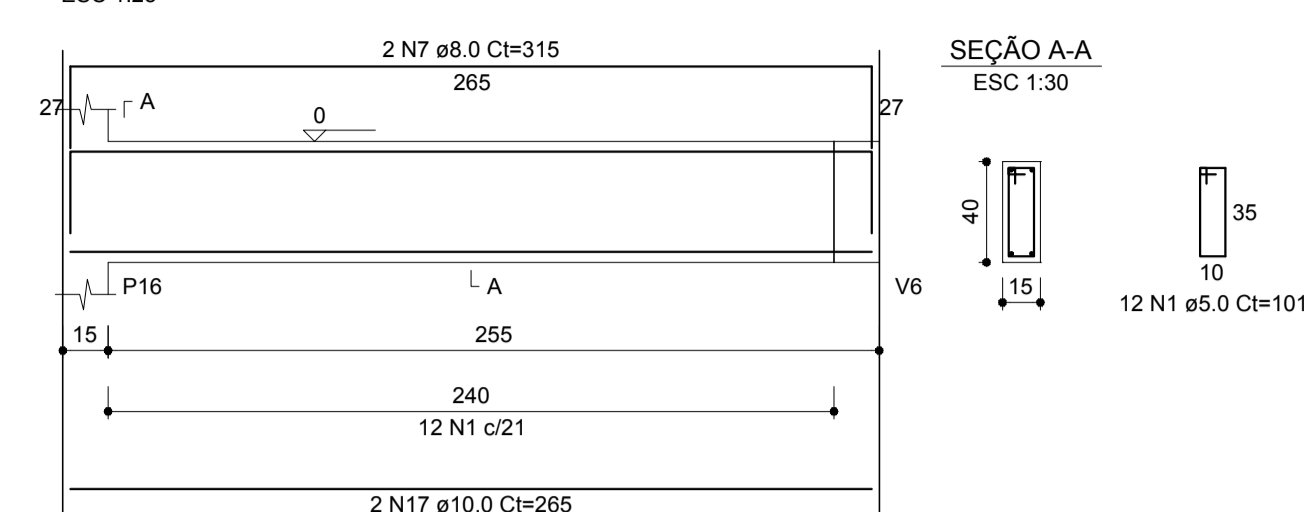


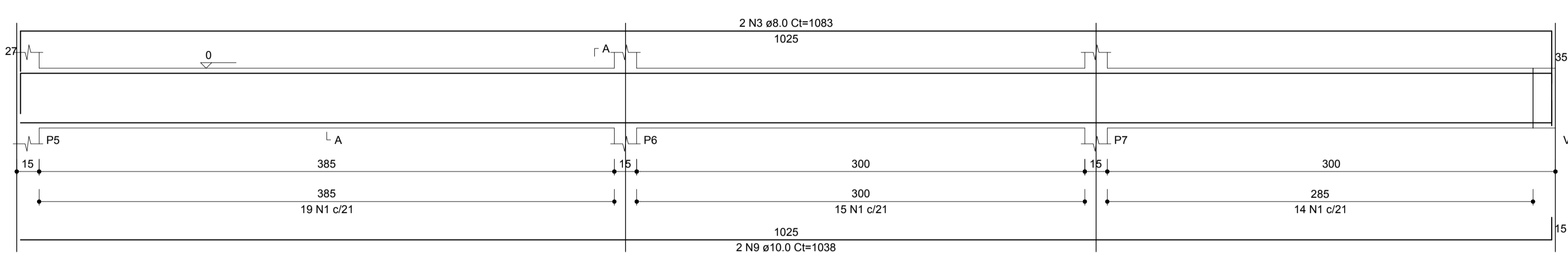
V1 (15 x 40)



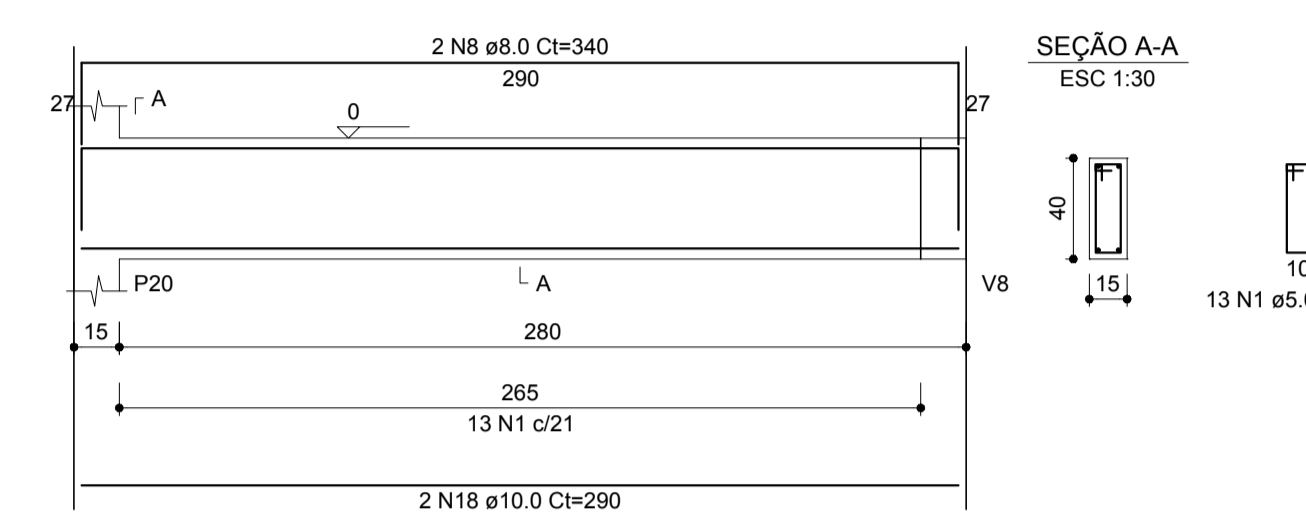
V12 (15 x 40)



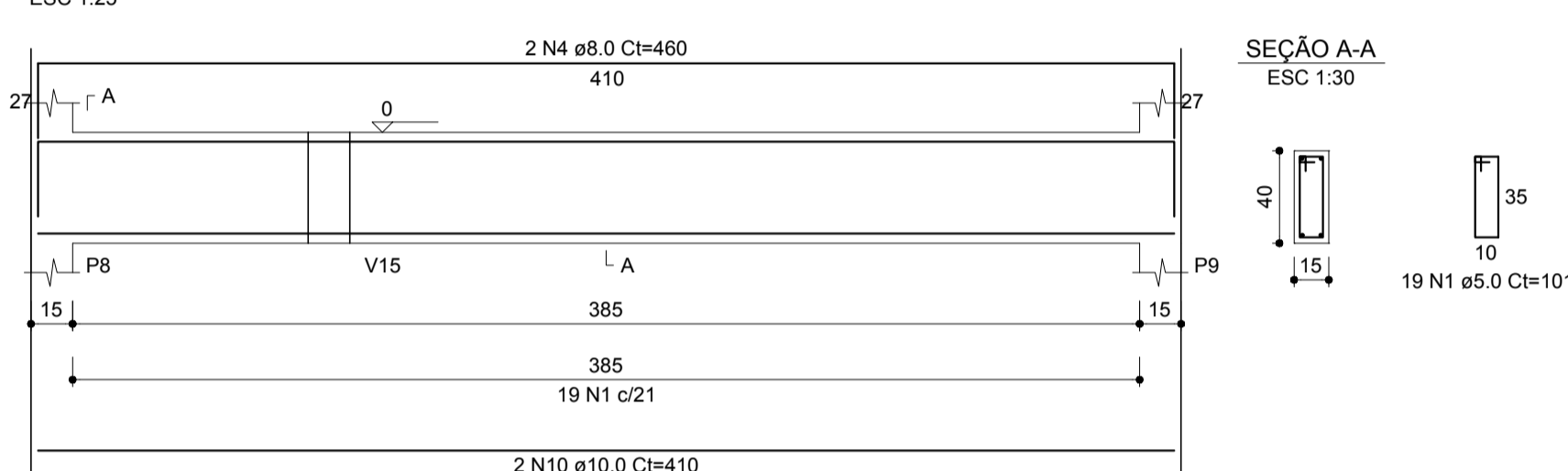
V2 (15 x 40)



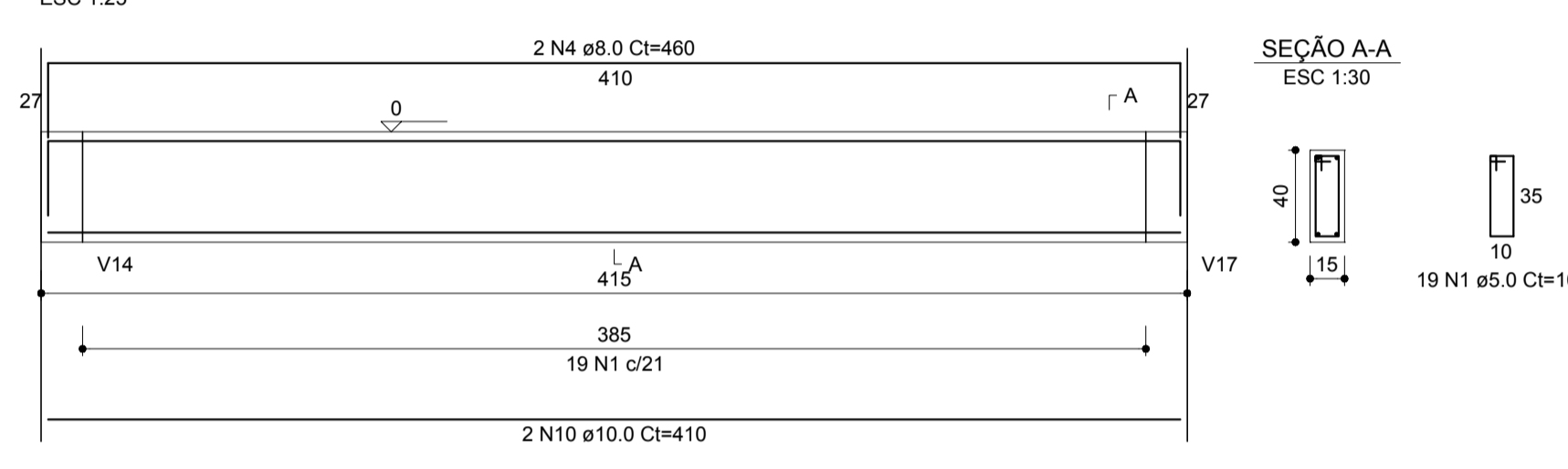
V13 (15 x 40)



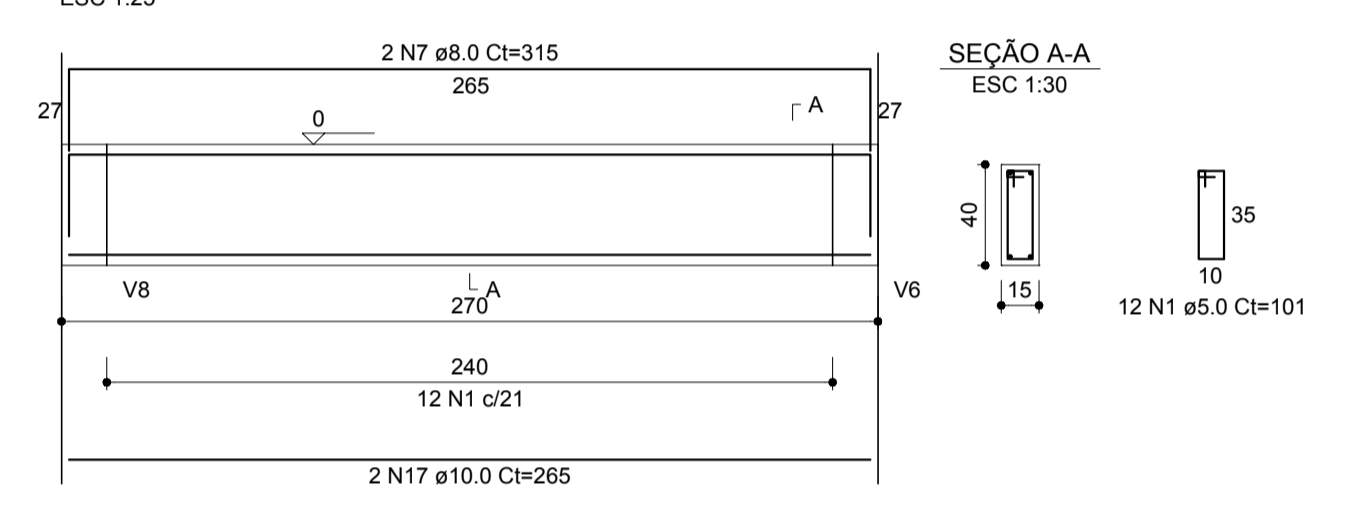
V3 (15 x 40)



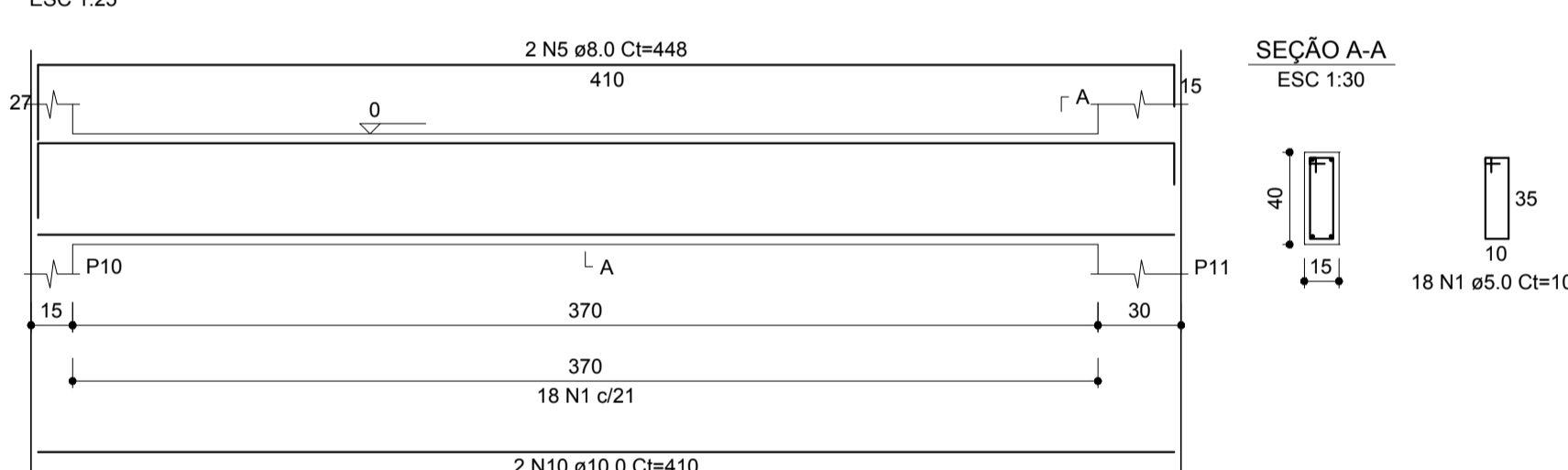
V4 (15 x 40)



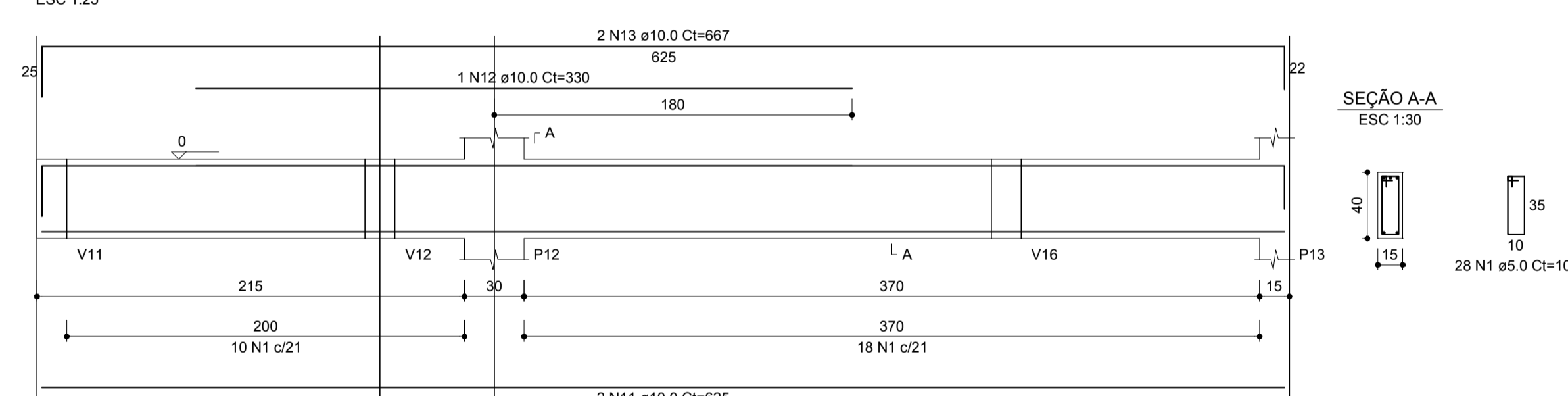
V16 (15 x 40)



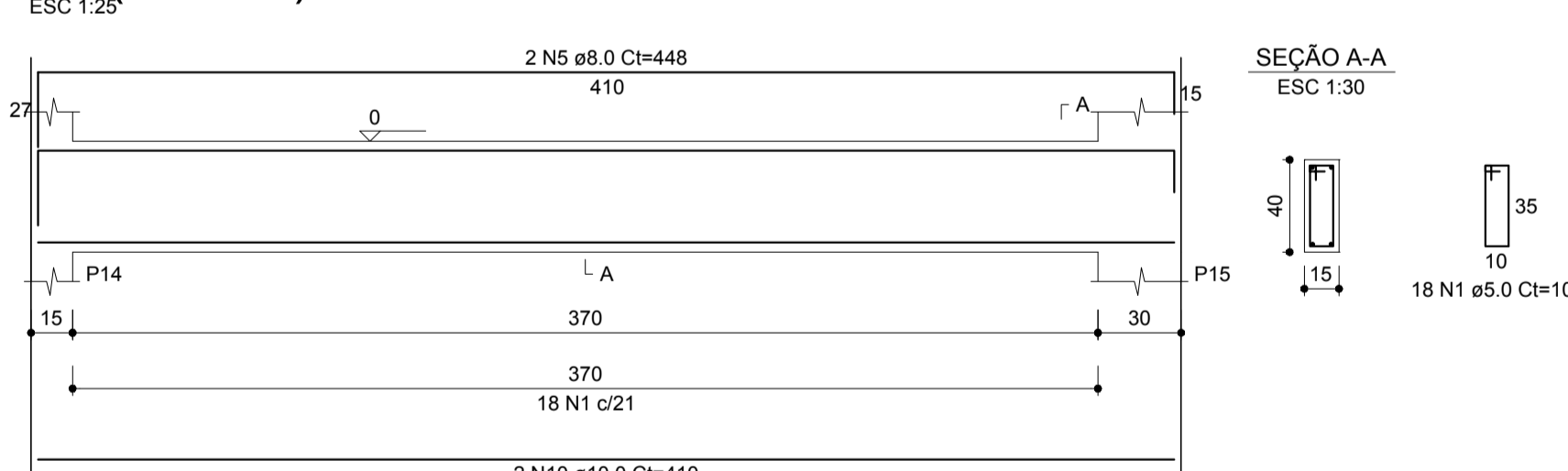
V5 (15 x 40)



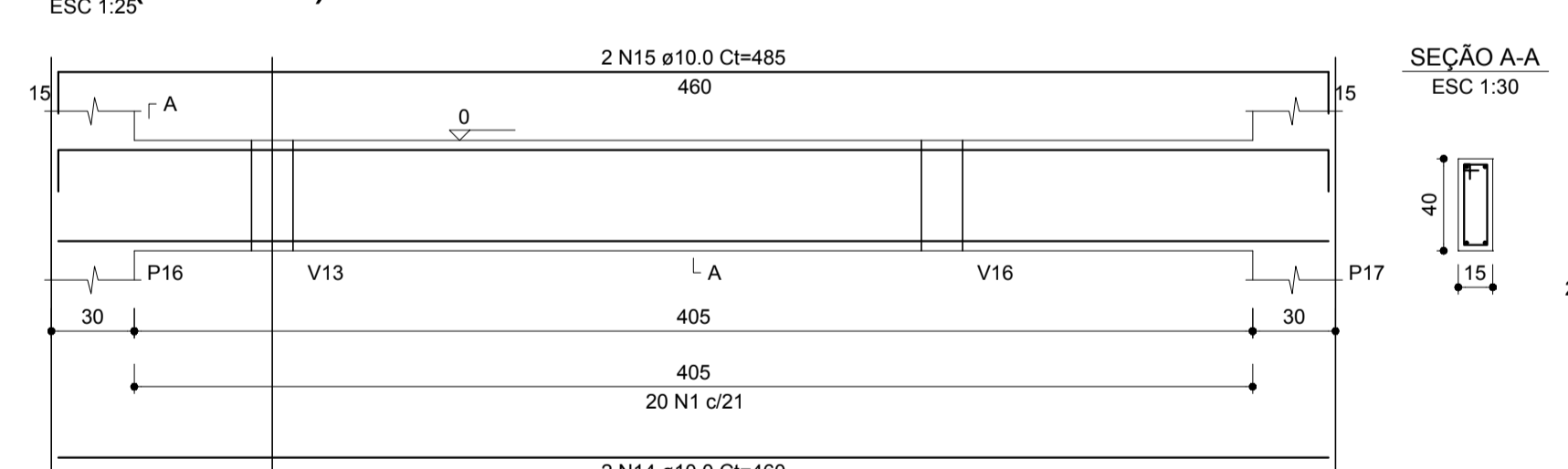
V6 (15 x 40)



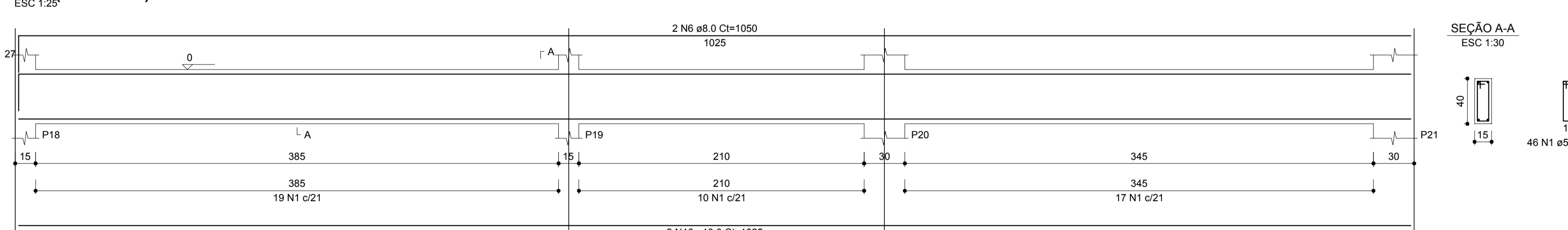
V7 (15 x 40)



V8 (15 x 40)



V9 (15 x 40)



RELAÇÃO DO AÇO

AÇO	N	DIAM (mm)	QUANT	C.UNIT (cm)	C.TOTAL (cm)
CA60	1	5.0	301	101	30401
CA50	2	8.0	2	1075	2150
	3	8.0	2	1083	2166
	4	8.0	4	460	1840
	5	8.0	4	448	1792
	6	8.0	2	1050	2100
	7	8.0	4	315	1260
	8	8.0	2	340	680
	9	10.0	4	1038	4152
	10	10.0	8	410	3280
	11	10.0	2	625	1250
	12	10.0	1	330	330
	13	10.0	2	667	1334
	14	10.0	2	460	920
	15	10.0	2	485	970
	16	10.0	2	1025	2050
	17	10.0	4	265	1060
	18	10.0	2	290	580

RESUMO DO AÇO

AÇO	DIAM (mm)	C.TOTAL (m)	PESO (kg)
CA50	8.0	119.9	47.30
CA60	10.0	159.3	98.20
CA60	5.0	304	46.90
PESO TOTAL (kg)			
CA50		145.50	
CA60		46.90	

Volume de concreto (C-25) = 4.01 m³
Área de forma = 63.46 m²

DESCRIÇÃO	
PROJETO ESTRUTURAL - CENTRO DE REFERÊNCIA ESPECIALIZADO EM ASSISTÊNCIA SOCIAL	
PROPRIETÁRIO: PREFEITURA MUNICIPAL DE BREJETUBA	
LOGRADOURO: RUA CARMEM AUZERINA DE SOUZA ULIANA	CONTATO: ron7@ron7.com.br - 27-3733-1349 / 27-99970-7034
MUNICÍPIO: BREJETUBA	RESPONSÁVEL TÉCNICO:
ESTADO: ESPIRITO SANTO	
USO: COMUNITÁRIO	
DATA: ABRIL/2018	
ESPECIFICAÇÃO: FUNDAÇÃO	Claudinei Uliana Roncete Engenheiro Civil CREA:ES-042472/D
PRANCHA: 03/11	
CONTEUDO DA PRANCHA: ARMAÇÃO DAS VIGAS (BALDRAME)	
NOTA 1- TODAS AS MEDIDAS DEVERÃO SER CONFERIDAS NO LOCAL 2- EM CASO DE DÚVIDA, CONSULTE O ENGENHEIRO. TEL:2799905-8225 3- MEDIDAS EM CENTÍMETROS	

