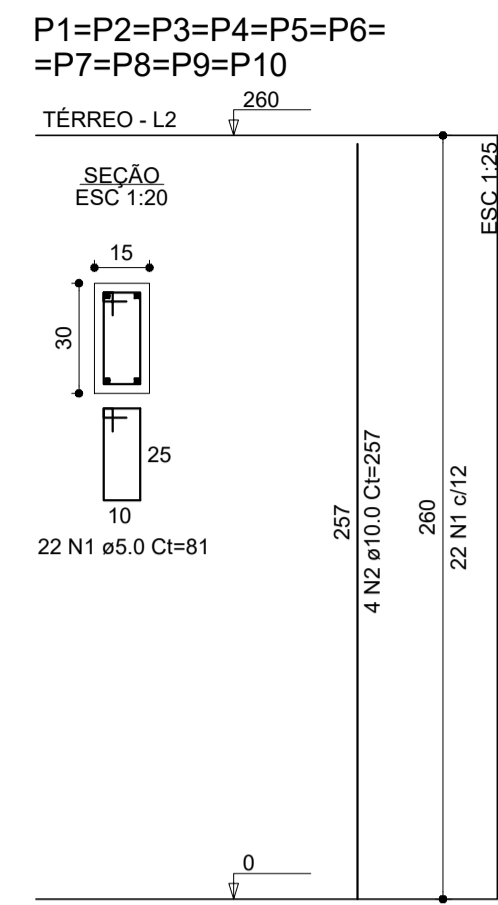
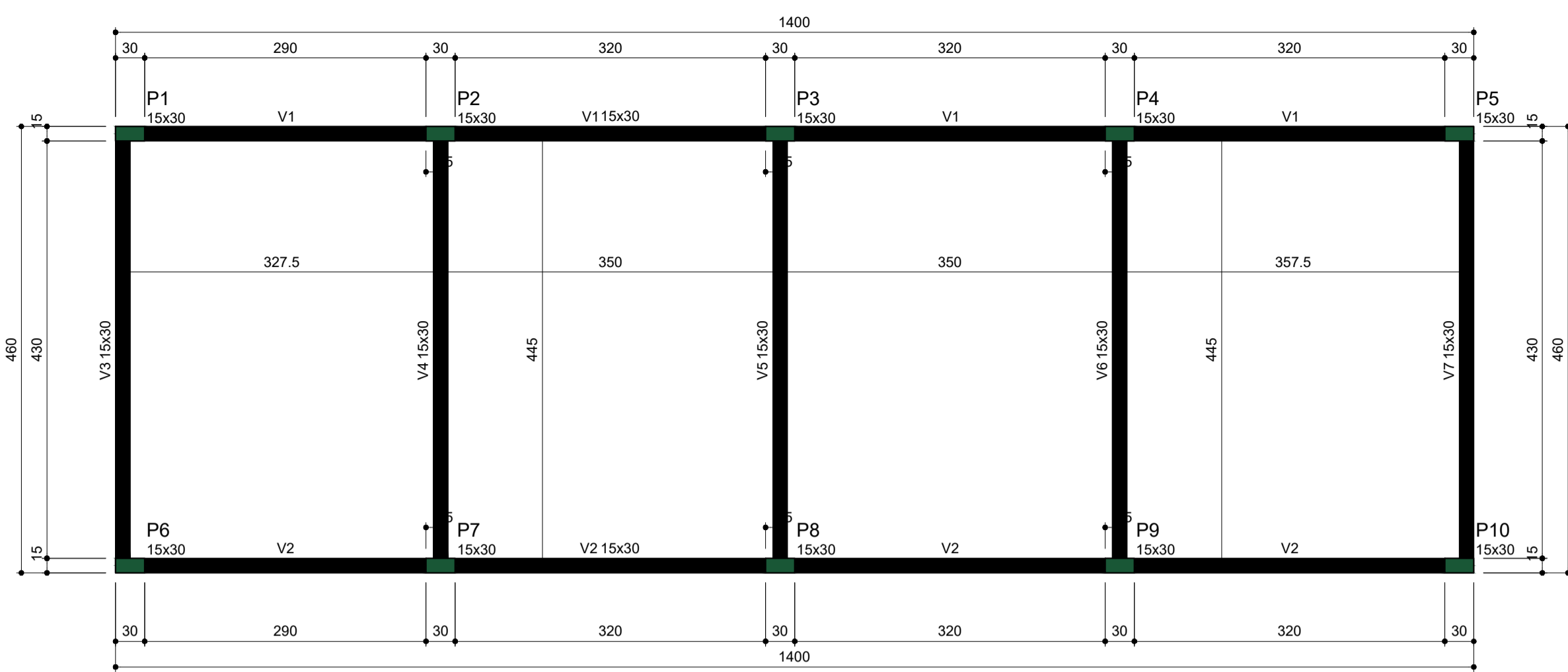


Características dos materiais	
fck	Ecs
(kgf/cm ²)	(kgf/cm ²)
250	241500

Legenda das vigas e paredes	
	Viga



RELAÇÃO DO AÇO

AÇO	N	DIAM (mm)	QUANT	C.UNIT (cm)	C.TOTAL (cm)
CA60	1	5.0	220	81	17820
CA50	2	10.0	40	257	10280

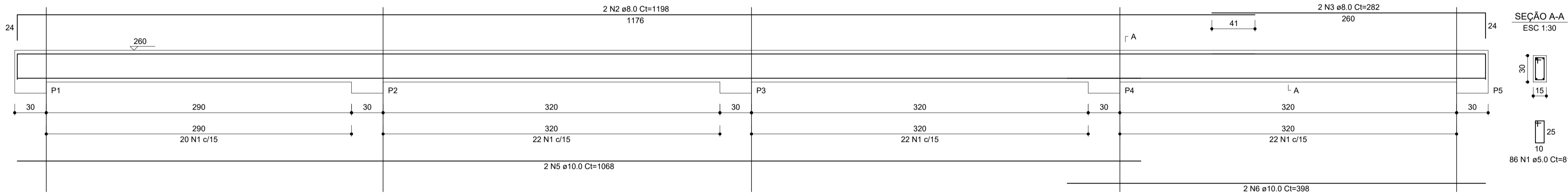
RESUMO DO AÇO

AÇO	DIAM (mm)	C.TOTAL (m)	PESO + 0% (kg)
CA50	10.0	102.8	63.4
CA60	5.0	178.2	27.5
PESO TOTAL (kg)			
CA50		63.4	
CA60		27.5	

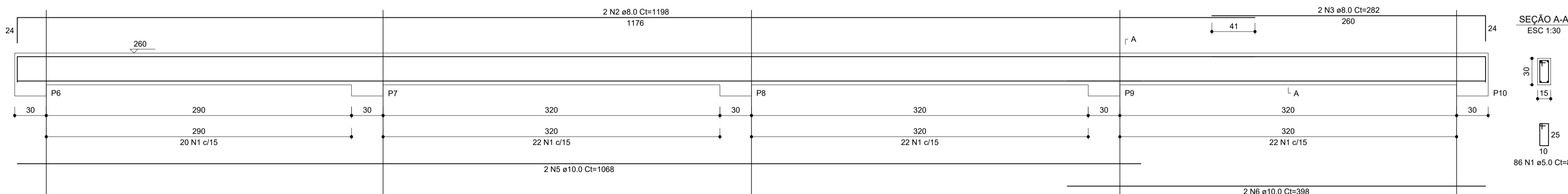
Volume de concreto (C-25) = 1.17 m³
Área de forma = 23.40 m²

Forma do pavimento TÉRREO
escala 1:50

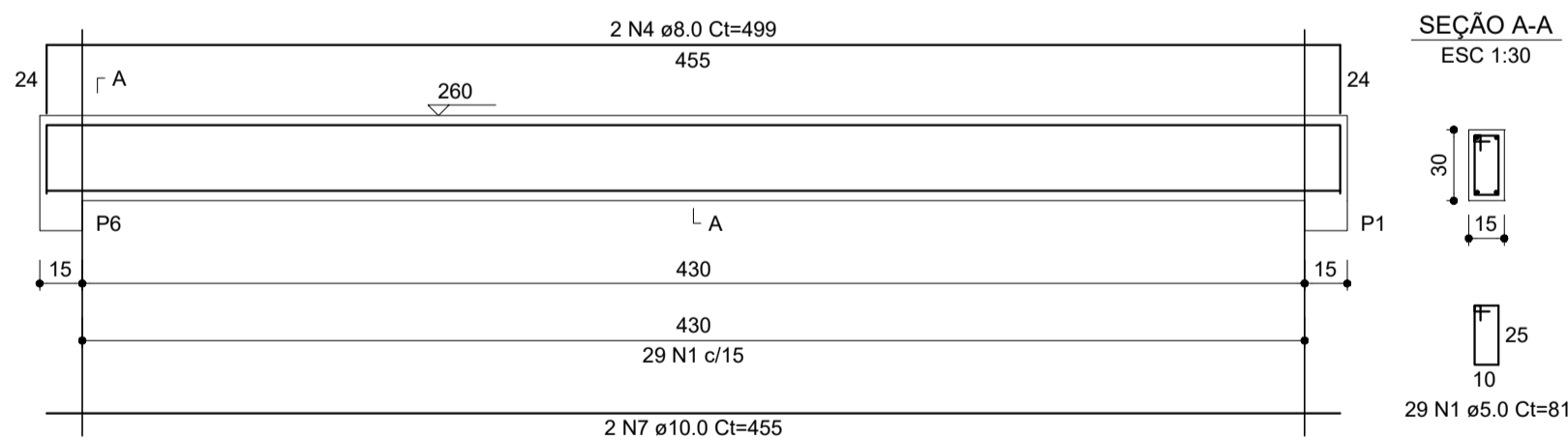
V1 (15 x 30)
ESC 1:25



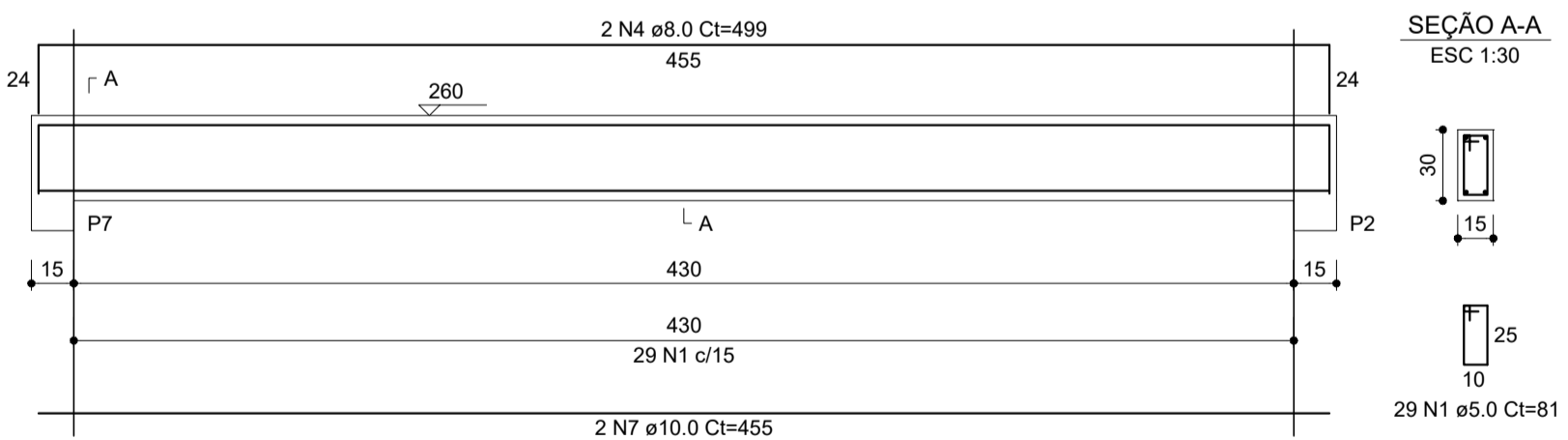
V2 (15 x 30)
ESC 1:25



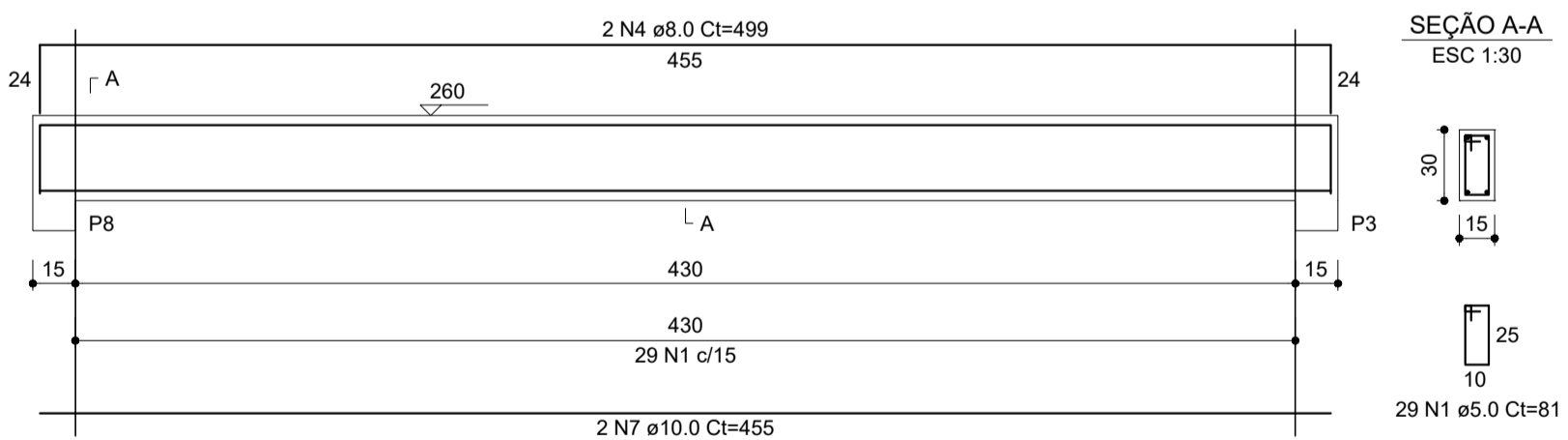
V3 (15 x 30)
ESC 1:25



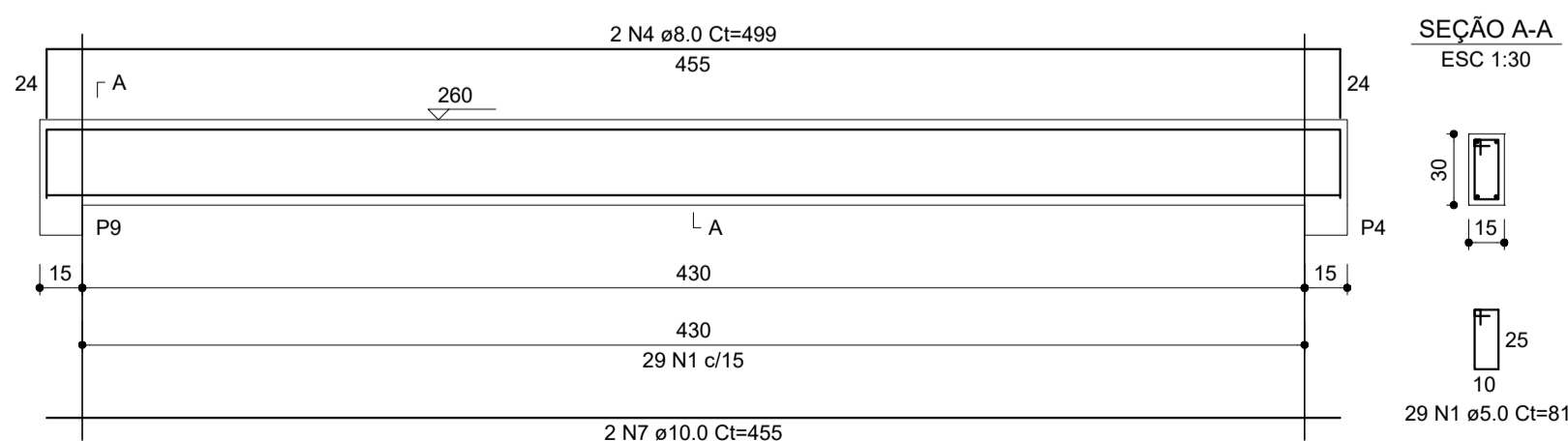
V4 (15 x 30)
ESC 1:25



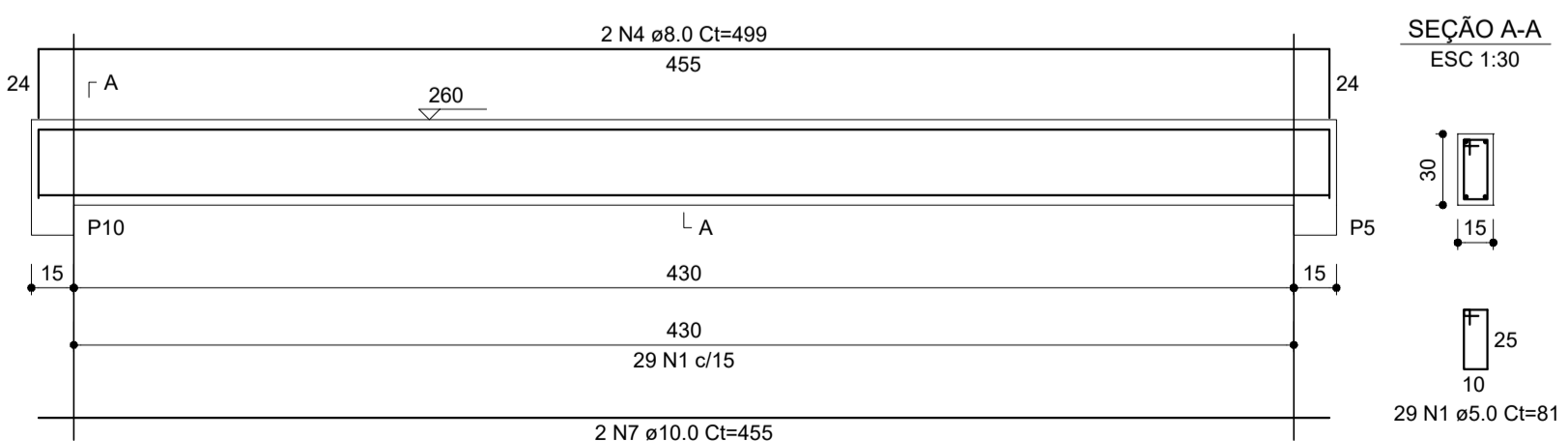
V5 (15 x 30)
ESC 1:25



V6 (15 x 30)
ESC 1:25



V7 (15 x 30)
ESC 1:25



RELAÇÃO DO AÇO

AÇO	N	DIAM (mm)	QUANT	C.UNIT (cm)	C.TOTAL (cm)
CA60	1	5.0	317	81	25677
CA50	2	8.0	4	1198	4792
	3	8.0	4	282	1128
	4	8.0	10	499	4990
	5	10.0	4	1068	4272
	6	10.0	4	398	1592
	7	10.0	10	455	4550

RESUMO DO AÇO

AÇO	DIAM (mm)	C.TOTAL (m)	PESO + 0% (kg)
CA50	8.0	109.1	43
CA60	10.0	104.1	64.2
PESO TOTAL (kg)			
CA50		107.3	
CA60		39.6	

Volume de concreto (C-25) = 2.29 m³
Área de forma = 38.25 m²

PROJETO ESTRUTURAL

PROPRIETÁRIO:	PREFEITURA MUNICIPAL DE BREJETUBA CPF: 01.612.674/0001-00	
RESPONSÁVEL TÉCNICO:	LUIZ JOSÉ DE FREITAS CREA MG 177118/D - VISTO ES 20151313	
CONTEÚDO DA PRANCHA	ARMAÇÃO DOS PILARES E VIGAS	TÉRREO
LOCAL/DATA	BREJETUBA/ES, AGOSTO DE 2018	
ENDEREÇO	AVENIDA PROJETADA - BAIRRO ULIANA	
NOTA	1-TODAS AS MEDIDAS DEVERÃO SER CONFIRMADAS NO LOCAL. 2-EM CASO DE DÚVIDA,CONSULTE O ENGENHEIRO. TEL(071)3733-1200 3-MEDIDAS EM CENTÍMETROS	
		FOLHA 02/02