

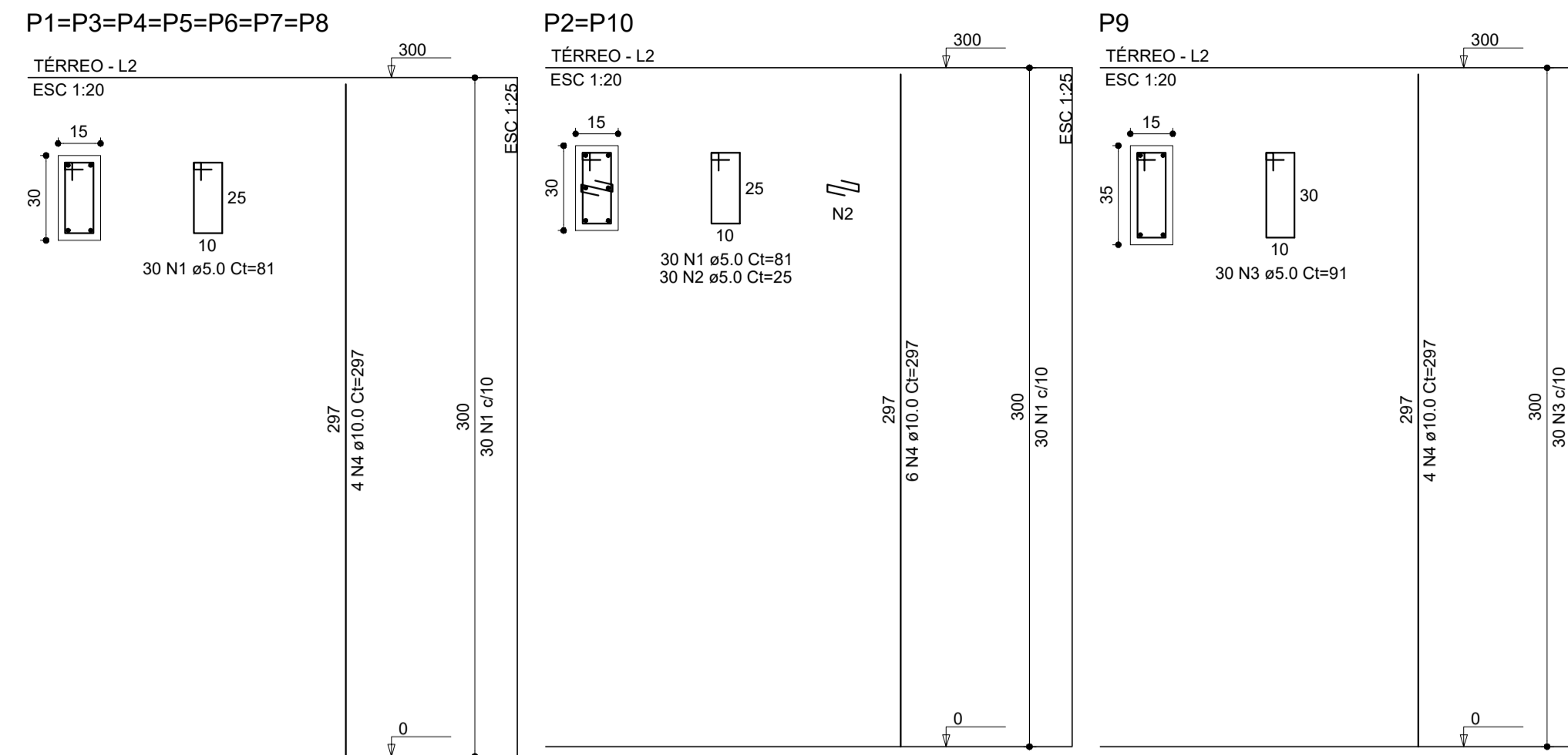
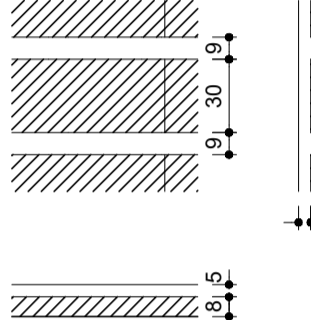
Blocos de enchimento					
Detalhe	Nome	Dimensões(cm)	Quantidade		
1	EPS Unidirecional	B8/30/125	h	b	by
			8	30	125
					153

Lajes					
Nome	Tipo	Altura (cm)	Elevação (cm)	Nível (cm)	Sobrecarga (kgf/m²)
L1	Pré-moldada	13	0	300	250
L2	Pré-moldada	13	0	300	250
L3	Pré-moldada	13	0	300	250
L4	Pré-moldada	13	0	300	250
L5	Pré-moldada	13	0	300	250
L6	Pré-moldada	13	0	300	250

Características dos materiais	
f _{ck} (kgf/cm²)	Ecs (kgf/cm²)
250	241500

Legenda das vigas e paredes	
	Viga
	Viga

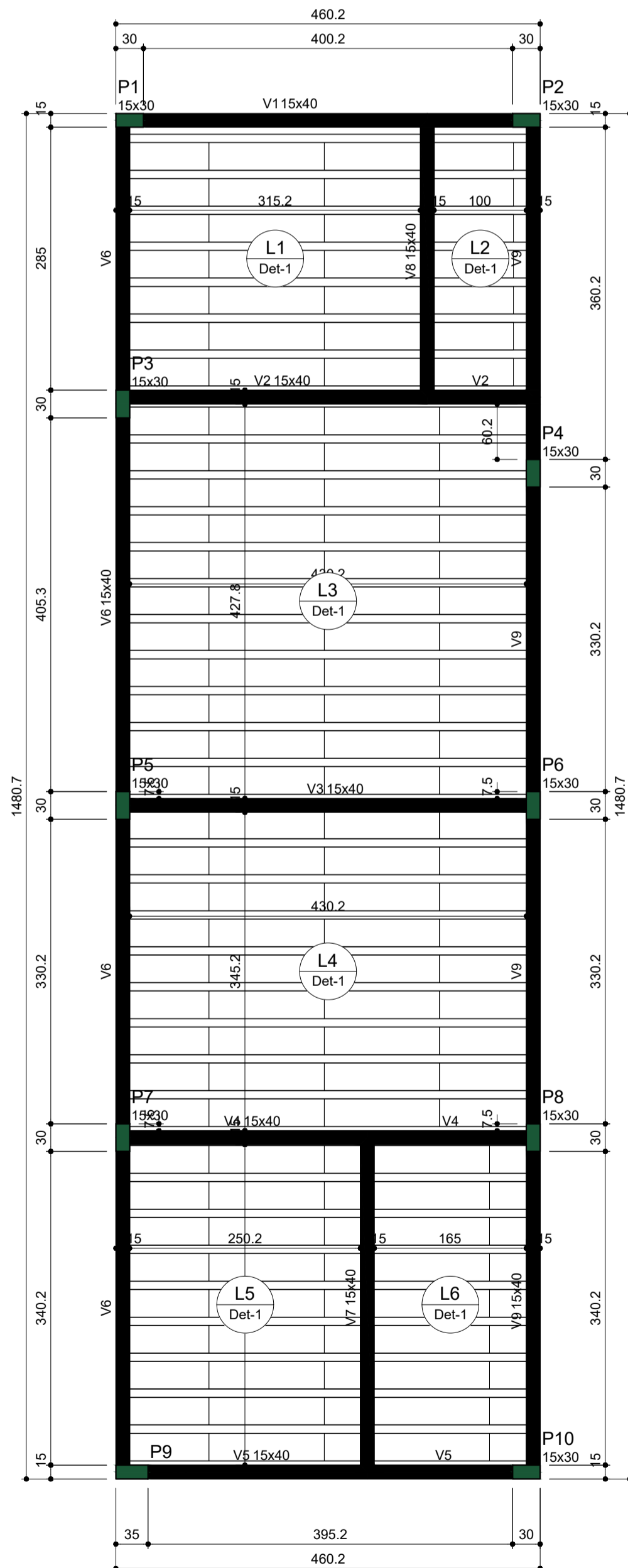
Detalhe 1 (esc. 1:30)



RELAÇÃO DO AÇO					
7xP1	2xP2	P9			
AÇO	N	DIAM (mm)	QUANT	C.UNIT (cm)	C.TOTAL (cm)
CA60	1	5.0	270	81	21870
	2	5.0	60	25	1500
	3	5.0	30	91	2730
CA50	4	10.0	44	297	13068

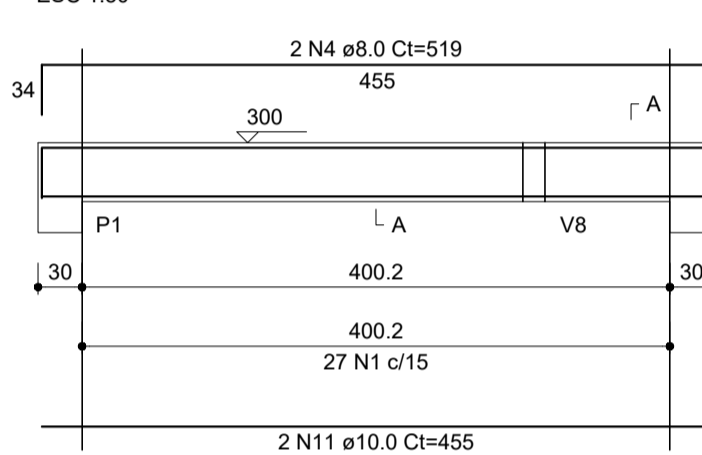
RESUMO DO AÇO			
AÇO	DIAM (mm)	C.TOTAL (m)	PESO (kg)
CA50	10.0	130.7	79.74
CA60	5.0	261	39.87
PESO TOTAL (kg)			
CA50			79.74
CA60			39.87

Volume de concreto (C-25) = 1.37 m³
Área de forma = 27.30 m²

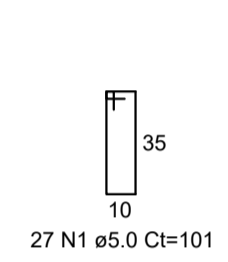


Forma do pavimento **TÉRREO**
escala 1:50

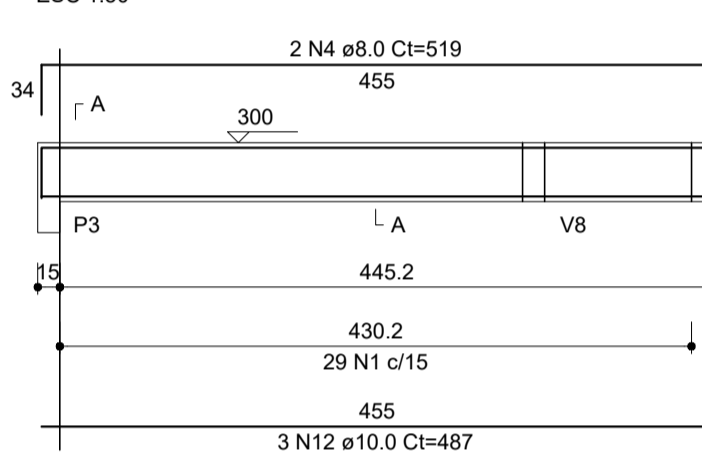
V1 (15 x 40)
ESC 1:50



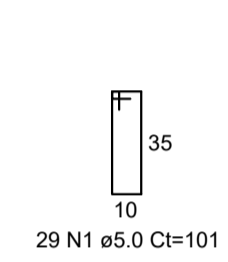
SEÇÃO A-A
ESC 1:25



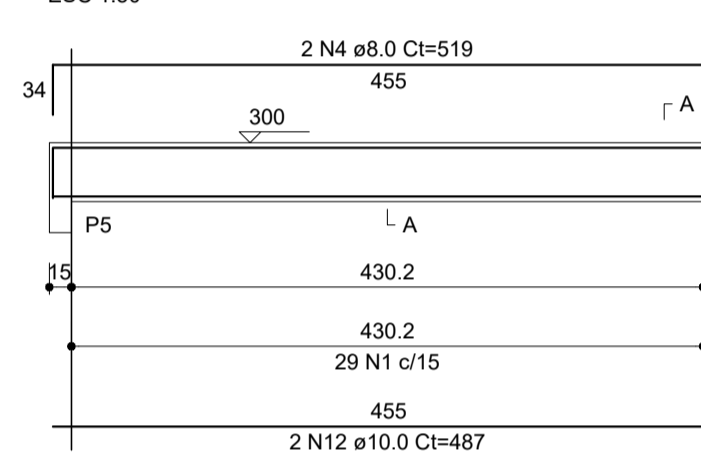
V2 (15 x 40)
ESC 1:50



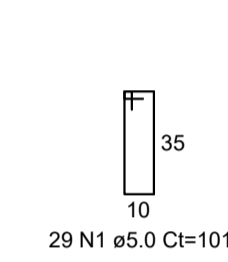
SEÇÃO A-A
ESC 1:25



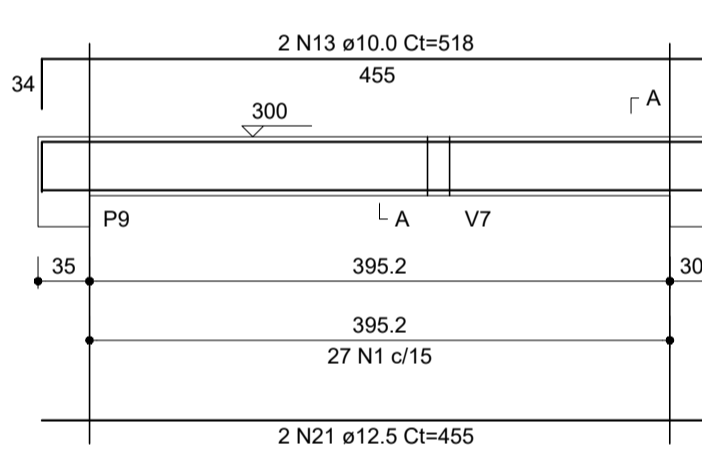
V3 (15 x 40)
ESC 1:50



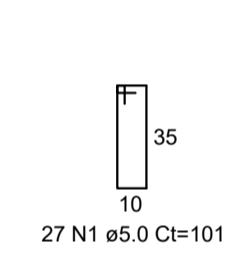
SEÇÃO A-A
ESC 1:25



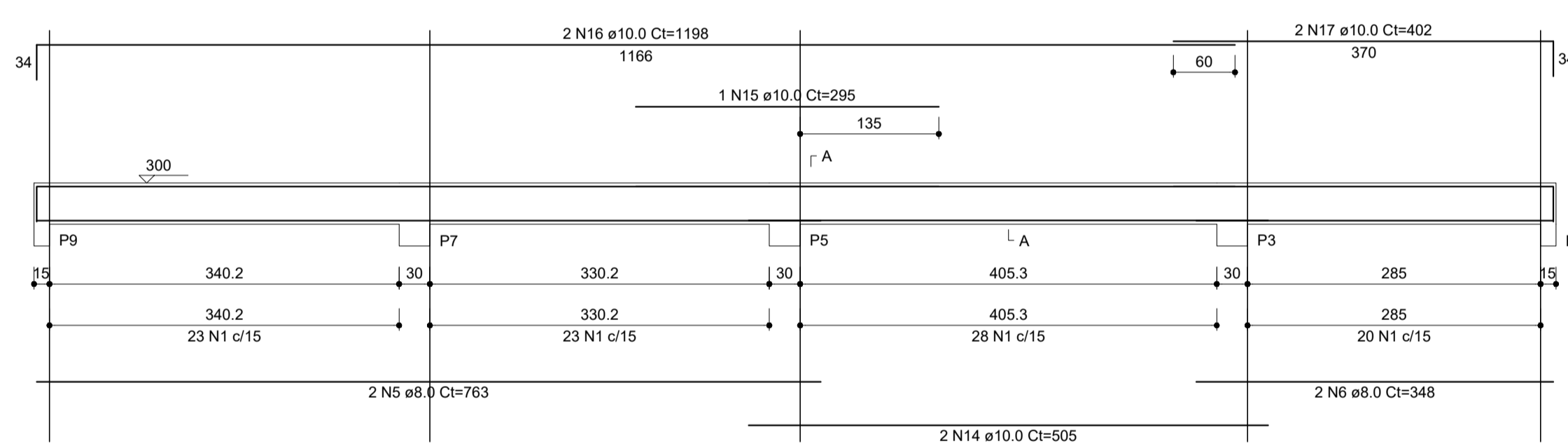
V5 (15 x 40)
ESC 1:50



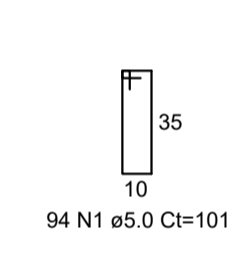
SEÇÃO A-A
ESC 1:25



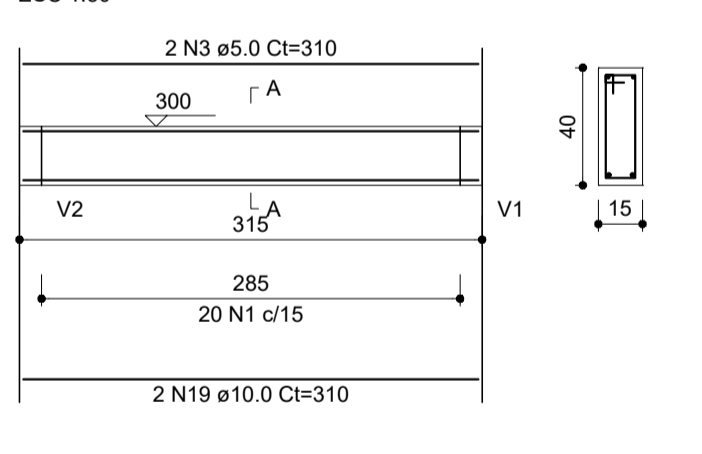
V6 (15 x 40)
ESC 1:50



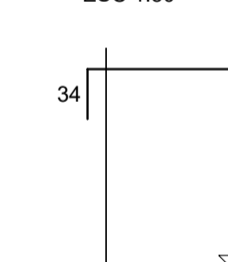
SEÇÃO A-A
ESC 1:25



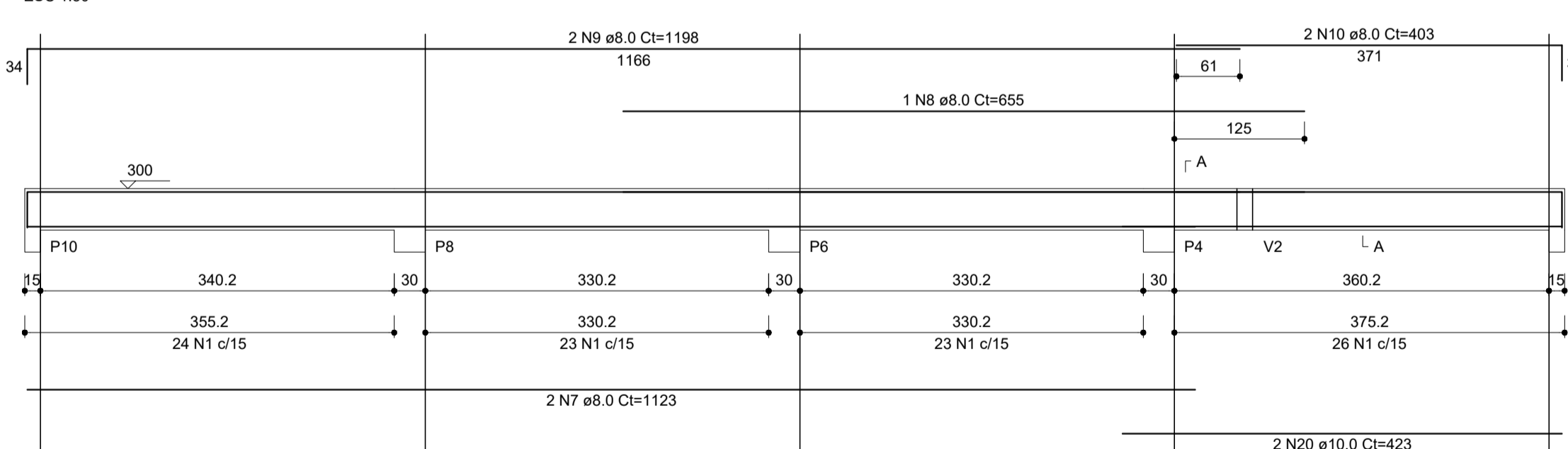
V8 (15 x 40)
ESC 1:50



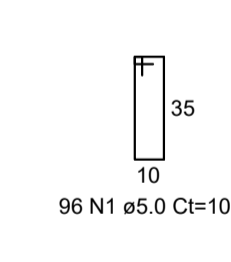
SEÇÃO A-A
ESC 1:25



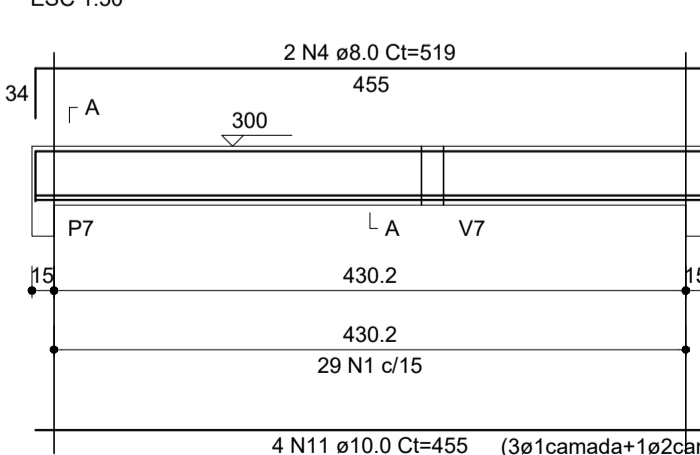
V9 (15 x 40)
ESC 1:50



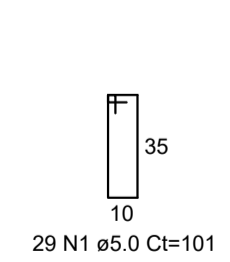
SEÇÃO A-A
ESC 1:25



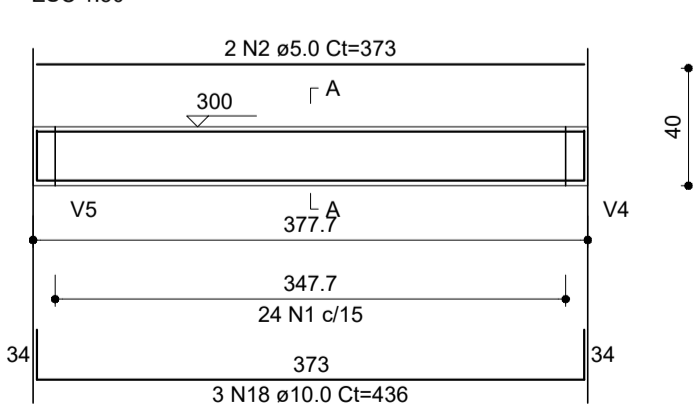
V4 (15 x 40)
ESC 1:50



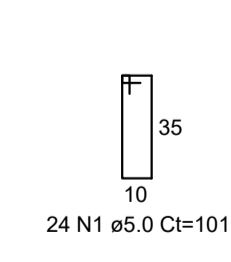
SEÇÃO A-A
ESC 1:25



V7 (15 x 40)
ESC 1:50



SEÇÃO A-A
ESC 1:25



RELAÇÃO DO AÇO					
AÇO	N	DIAM (mm)	QUANT	C.UNIT (cm)	C.TOTAL (cm)
CA60	1	5.0	375	101	37875
	2	5.0	2	373	746
	3	5.0	2	310	620
CA50	4	8.0	8	519	4152
	5	8.0	2	763	1526
	6	8.0	2	348	696
	7	8.0	2	1123	2246
	8	8.0	1	655	655
	9	8.0	2	1198	2396
	10	8.0	2	403	806
	11	10.0	6	455	2730
	12	10.0	5	487	2435
	13	10.0	2	518	1036
	14	10.0	2	505	1010
	15	10.0	1	295	295
	16	10.0	2	1198	2396
	17	10.0	2	402	804
	18	10.0	3	436	1308
	19	10.0	2	310	620
	20	10.0	2	423	846
	21	12.5	2	455	910

RESUMO DO AÇO			
AÇO	DIAM (mm)	C.TOTAL (m)	PESO (kg)
CA50	8.0	124.8	48.78
	10.0	134.8	82.26
	12.5	9.1	6.64
CA60	5.0	392.4	59.85
PESO TOTAL (kg)			
CA50			139.68
CA60			59.85

Volume de concreto (C-25) = 3.57 m³
Área de forma = 56.57 m²

PROJETO ESTRUTURAL

PROPRIETÁRIO:
PREFEITURA MUNICIPAL DE BREJETUBA
CPF: 01.612.674/0001-00

RESPONSÁVEL TÉCNICO:
LUIZ JOSÉ DE FREITAS CREA MG 177118/D - VISTO ES 20151313

CONTEÚDO DA PRANCHA: PLANTA DE FORMA, PILARES E VIGAS

LOCAL/DATA: BREJETUBA/ES, AGOSTO DE 2018

ENDEREÇO: AVENIDA PROJETADA - BAIRRO ULIANA

NOTA:
1-TODAS AS MEDIDAS DEVERÃO SER CONFERIDAS NO LOCAL
2-EM CASO DE DÚVIDA CONSULTE O ENGENHEIRO - TEL: (37) 3733-1200
3-MEDIDAS EM CENTÍMETROS

TÉRREO

FOLHA
03/04