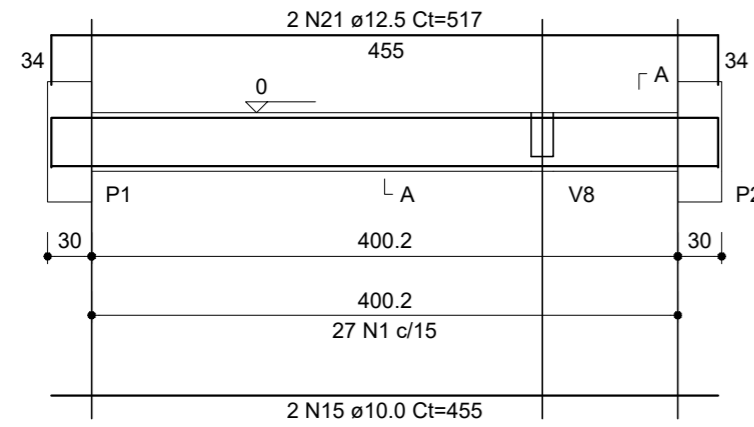
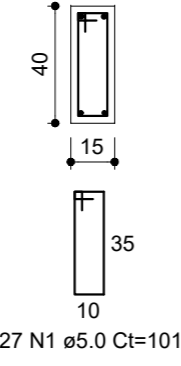


V1 (15 x 40)

ESC 1:50

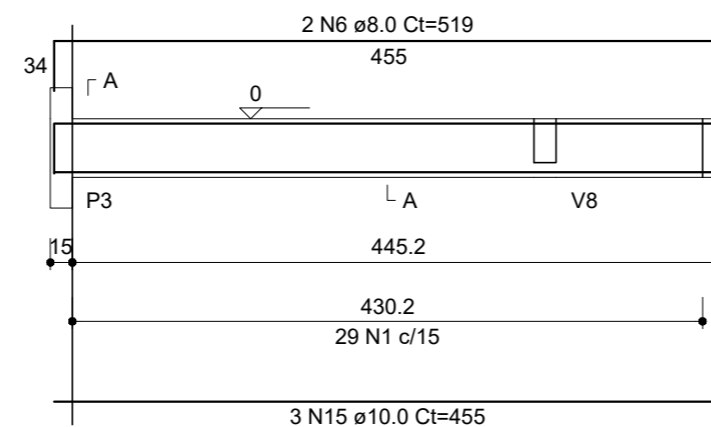


SEÇÃO A-A ESC 1:25

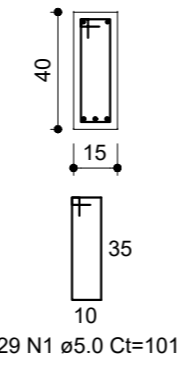


V2 (15 x 40)

ESC 1:50

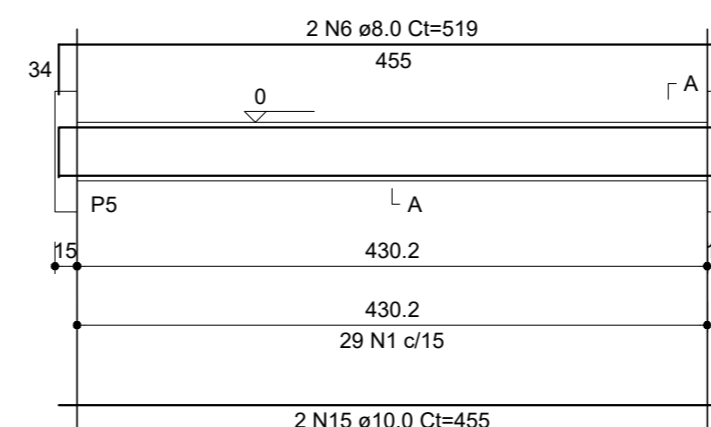


SEÇÃO A-A ESC 1:25

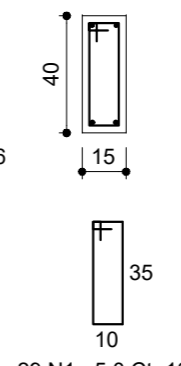


V3 (15 x 40)

ESC 1:50

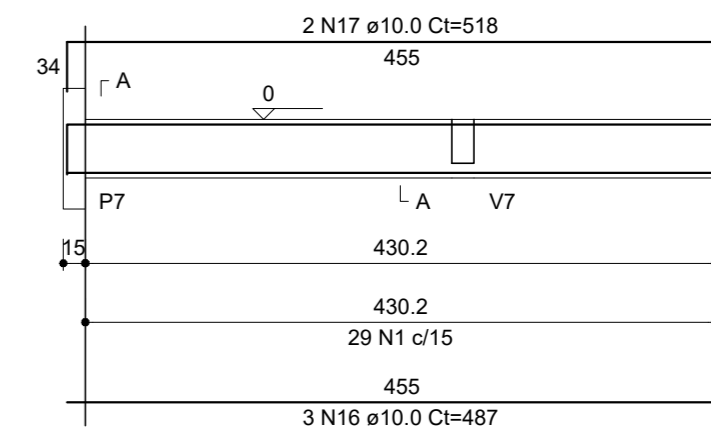


SEÇÃO A-A ESC 1:25

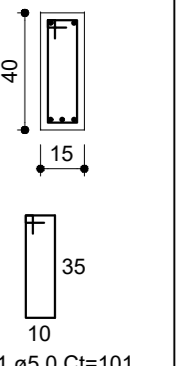


V4 (15 x 40)

ESC 1:50

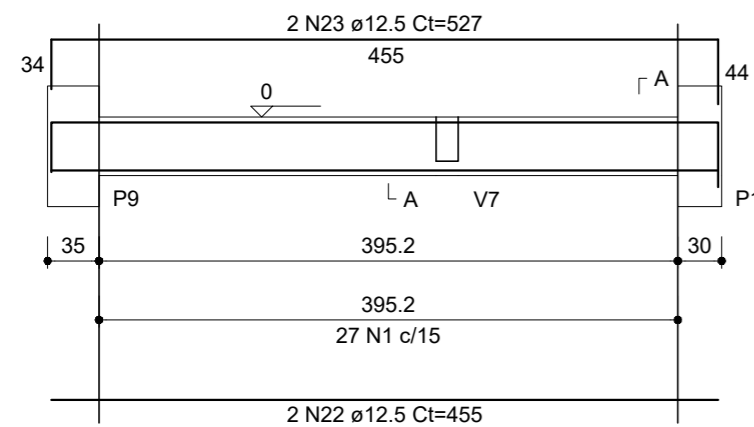


SEÇÃO A-A ESC 1:25

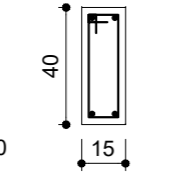


V5 (15 x 40)

ESC 1:50

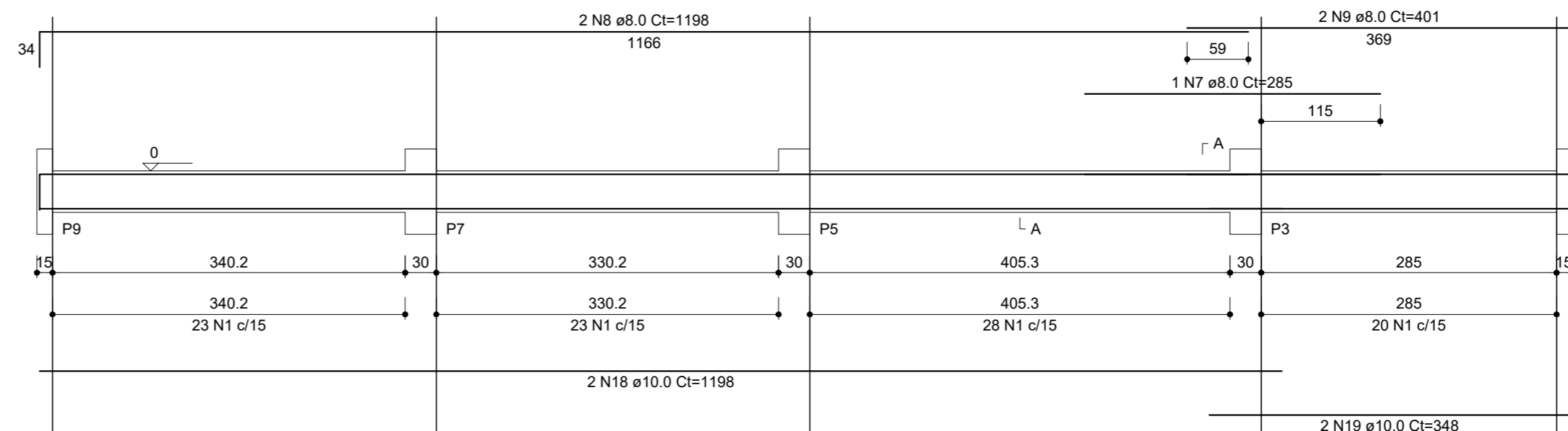


SEÇÃO A-A ESC 1:25

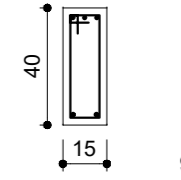


V6 (15 x 40)

ESC 1:50

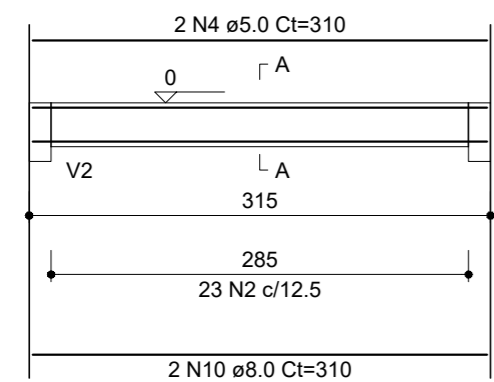


SEÇÃO A-A ESC 1:25

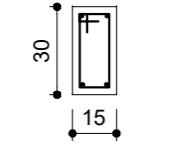


V8 (15 x 30)

ESC 1:50

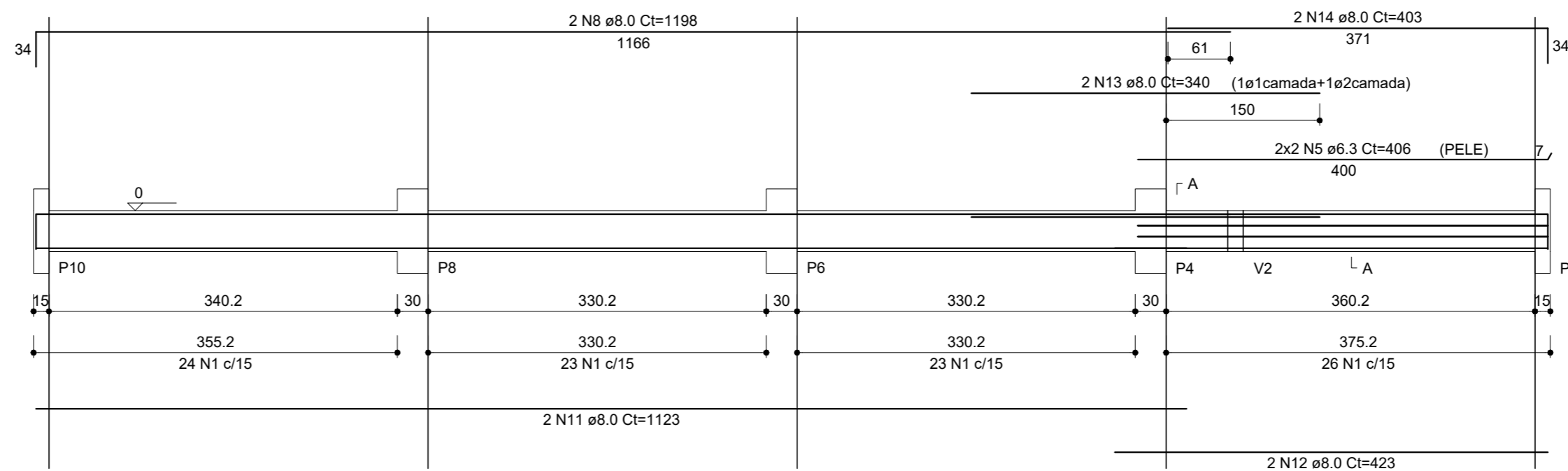


SEÇÃO A-A ESC 1:25

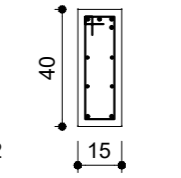


V9 (15 x 40)

ESC 1:50

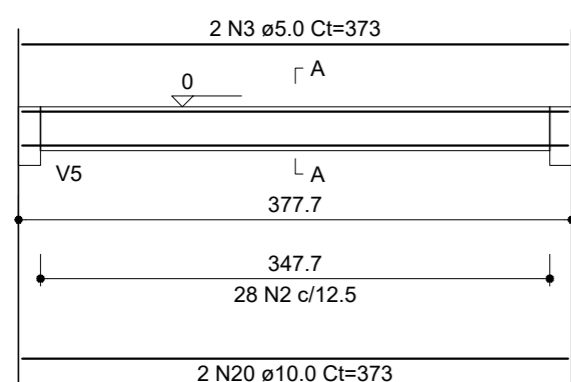


SEÇÃO A-A ESC 1:25

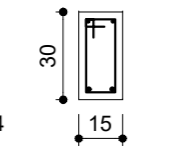


V7 (15 x 30)

ESC 1:50



SEÇÃO A-A ESC 1:25



RELAÇÃO DO AÇO

AÇO	N	DIAM (mm)	QUANT	C.UNIT (cm)	C.TOTAL (cm)
CA60	1	5.0	331	101	33431
	2	5.0	51	81	4131
	3	5.0	2	373	746
	4	5.0	2	310	620
	5	6.3	4	406	1624
	6	8.0	4	519	2076
	7	8.0	1	285	285
	8	8.0	4	1198	4792
	9	8.0	2	401	802
	10	8.0	2	310	620
	11	8.0	2	1123	2246
CA50	12	8.0	2	423	846
	13	8.0	2	340	680
	14	8.0	2	403	806
	15	10.0	7	455	3185
	16	10.0	3	487	1461
	17	10.0	2	518	1036
	18	10.0	2	1198	2396
	19	10.0	2	348	696
	20	10.0	2	373	746
	21	12.5	2	517	1034
	22	12.5	2	455	910
	23	12.5	2	527	1054

RESUMO DO AÇO

AÇO	DIAM (mm)	C.TOTAL (m)	PESO (kg)
CA50	6.3	16.2	3.96
	8.0	131.5	51.39
	10.0	95.2	57.14
	12.5	30	28.62
CA60	5.0	389.3	59.40
PESO TOTAL (kg)			
CA50	141.11		
CA60	59.40		

Volume de concreto (C-25) = 3.47 m³
Área de forma = 55.19 m²

PROJETO ESTRUTURAL

PROPRIETÁRIO:	PREFEITURA MUNICIPAL DE BREJETUBA CPF: 01.612.674/0001-00	
RESPONSÁVEL TÉCNICO:	LUIZ JOSÉ DE FREITAS CREA MG 177118/D - VISTO ES 20151313	
CONTEÚDO DA PRANCHA	ARMAÇÃO DAS VIGAS	FUNDAÇÃO
LOCAL/DATA	BREJETUBA/ES, AGOSTO DE 2018	
ENDEREÇO	AVENIDA PROJETADA - BAIRRO ULIANA	
NOTA	1-TODAS AS MEDIDAS DEVERÃO SER CONFERIDAS NO LOCAL 2-EM CASO DE DÚVIDA,CONSULTE O ENGENHEIRO. TEL(27)3733-1200 3-MEDIDAS EM CENTÍMETROS	
	FOLHA	02/04